



**POT BOY**



**POT BOY – SERIES 6**

**INSTALLATION, OPERATING AND MAINTENANCE MANUAL**

**PLEASE LEAVE WITH OPERATOR**

**EC DECLARATION OF CONFORMITY**  
(Guarantee of Production Quality)



We, Imperial Machine Company Limited of:  
Unit 1, Abbey Road, Wrexham Industrial Estate, Wrexham, LL13  
9RF

Declare under our sole responsibility that the machine

**POT BOY – SERIES 6**

as described in the attached technical documentation is in conformity with the Machine Safety Directive 89/392/EEC as amended by 91/368/EEC and 93/44/EEC and is manufactured under a quality system BSEN ISO 9001:2000. It is also in conformity with the protection requirements of the Electro Magnetic Compatibility Directive 89/336/EEC and is manufactured in accordance with harmonised standards EN 50-014-1 Generic Emission and EN 50-014-2 Generic Immunity (plus product specific standards). It also satisfies the essential requirements of the Low Voltage Directive 73/23/EEC amended by 93/68/EEC.

Approved by E Plumb, Engineering  
Manager

A handwritten signature in black ink, appearing to read 'E Plumb', is written over a light grey, stylized signature template.

Signed at Wrexham, Date

September 2017

## INDEX

<b>GUARANTEE.....</b>	<b>4</b>
<b>DELIVERY.....</b>	<b>4</b>
<b>SAMPLE RATING LABEL .....</b>	<b>4</b>
<b>INTRODUCTION.....</b>	<b>5</b>
<b>INSTALLATION.....</b>	<b>5</b>
<b>OPERATION.....</b>	<b>6</b>
<b>USAGE TIPS .....</b>	<b>6</b>
<b>MAINTENANCE .....</b>	<b>6</b>
<b>WIRING DIAGRAM .....</b>	<b>7</b>
<b>LAYOUT DIMESIONS .....</b>	<b>8</b>
<b>PART LIST .....</b>	<b>9</b>
<b>ORDERING SPARE PARTS .....</b>	<b>10</b>

## GUARANTEE

This equipment is guaranteed by IMC for 1 Year from the date of purchase from IMC or from one of its stockists, dealers or distributors.

The guarantee is limited to the replacement of faulty parts or products and excludes any consequential loss or expense incurred by purchasers. Defects which arise from faulty installation, inadequate maintenance, incorrect use, connection to the wrong electricity supply or fair wear and tear are not covered by the guarantee.

## PLEASE OBSERVE THESE INSTRUCTIONS CAREFULLY

This guarantee applies in this form to installations within the UK only.

## DELIVERY

The machine is packaged in a carton. Please check the contents against the list below.

Wall mounting frame	1
Nylon bristle brush head	1
Magikut brush head/4 pads	1

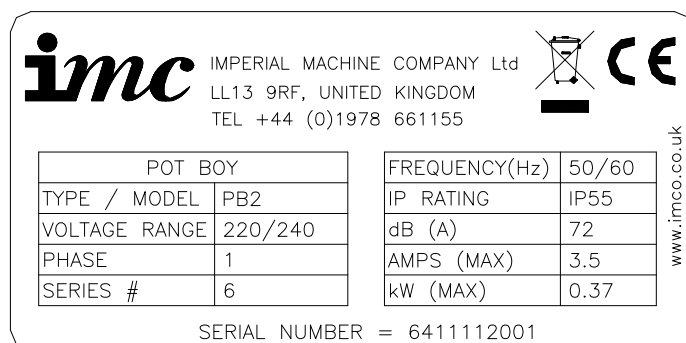
If any accessories have been ordered they will be supplied in separate packages.

Please notify the carrier and the supplier within three days if anything is missing or damaged.

Check that the correct machine has been supplied and that the voltage, marked on the rating plate on the motor, is suitable for the supply and control voltage available. The rating plate is located at the back of the cylinder near the supply cable inlet.

## SAMPLE RATING LABEL

FIGURE 1 – SAMPLE RATING LABEL



## INTRODUCTION

This machine is designed for the cleaning of utensils and equipment in commercial kitchens by means of a rotating brush or other tool.

## INSTALLATION

### For the Installer:

These Instructions contain important information designed to help the user obtain the maximum benefit from the investment in an IMC POT BOY.

Please read them carefully before starting work, and consult with the supplier in the event of any queries.

Be sure to leave this Instruction Manual with the user after the installation of the machine is complete.

### Procedure:

For wall mounted units, fix the wall bracket supplied to the wall at a height of 1150mm above the sink bowl where the machine will be used. This height gives optimum user comfort combined with a good reach of the hydraulic hoses.

Connect the machine to single-phase power supply (UK: 13 amp socket), having first checked that the voltage shown on the rating plate on the back of the machine is correct for the electricity available.

Mobile units require no installation. However, thought must be given to where the unit will be plugged in around the kitchen during use. A coiled extension lead of the appropriate type usually provides the most practical and convenient solution.

**WARNING: This machine must be earthed**



## OPERATION

1. Select the appropriate brush for the task in hand and fit this to the output shaft of the hand held hydraulic motor, screwing the brush head on as far as it will go. Hand pressure only is required to fit and remove the brush heads.
2. To start the machine, switch on at the mains, hold the handle in one hand, turn the black switch anti-clockwise to position I
3. Units with foot pedals: turn the switch clockwise to position II, and press the foot pedal to start the machine

Should the brush become entangled and jam, a relief valve will open to prevent injury to the operator and damage to the machine. It will also open if the operator applies undue pressure.

The valve is correctly set when the machine leaves the factory; do not adjust without first consulting the manufacturer or its agents.

## USAGE TIPS

1. For general cleaning of residual material in pots and pans use the nylon bristle brush.
2. A few inches of water and a little detergent in the bottom of the pot are sufficient.
3. Never fill the sink more than half full.
4. To avoid spraying, always start the machine with the nylon bristle brush facing vertically down into the pot or sink.
5. When operating the machine with the brush handle held in the horizontal position, ensure that the brush head is towards the outside of the hand: this will ensure that any spray is directed away from the operator.
6. To restore discoloured aluminium pans to new, use a nylon brush with scouring powder.
7. Use the magikut brush-head to decarbonise the bottoms of the pots and pans, as well as for baking trays, hobs, griddles and ovens.
8. Always use the magikut pads **DRY**.
9. Never use a magikut brush on coated or plated surfaces.
10. There is no need to apply excessive pressure or to oscillate the brush rapidly.

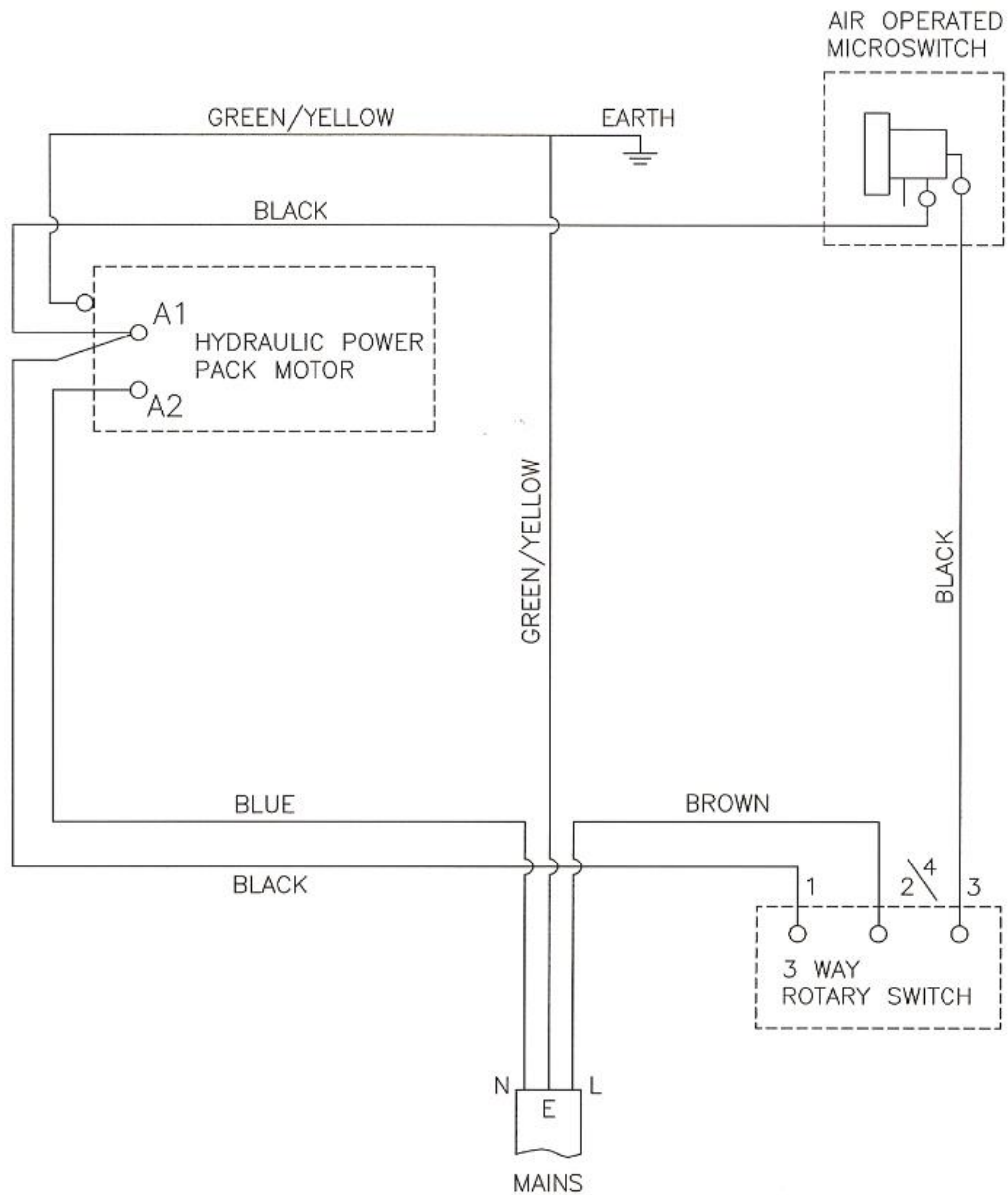
## LET THE MACHINE DO THE WORK.

## MAINTENANCE

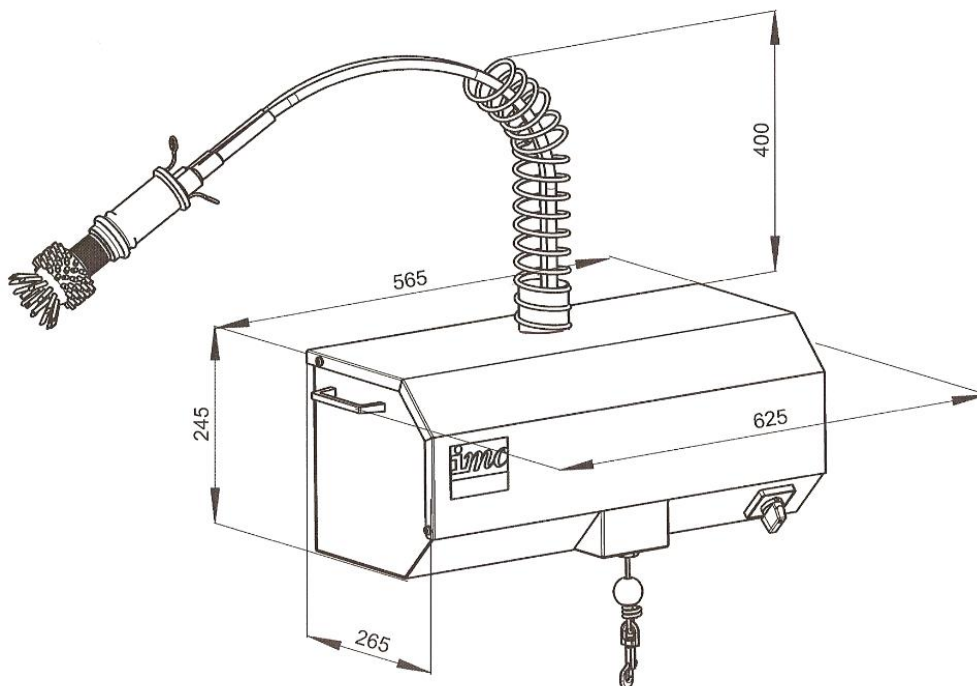
Keep the machine and accessories clean at all times. A wipe over with a damp cloth is usually sufficient. The foot-operated switch should be kept clean at all times.

Once a year the hydraulic fluid should be drained and renewed using 1.4 litres VG46 Hydraulic Oil, IMC Part No. K07/074

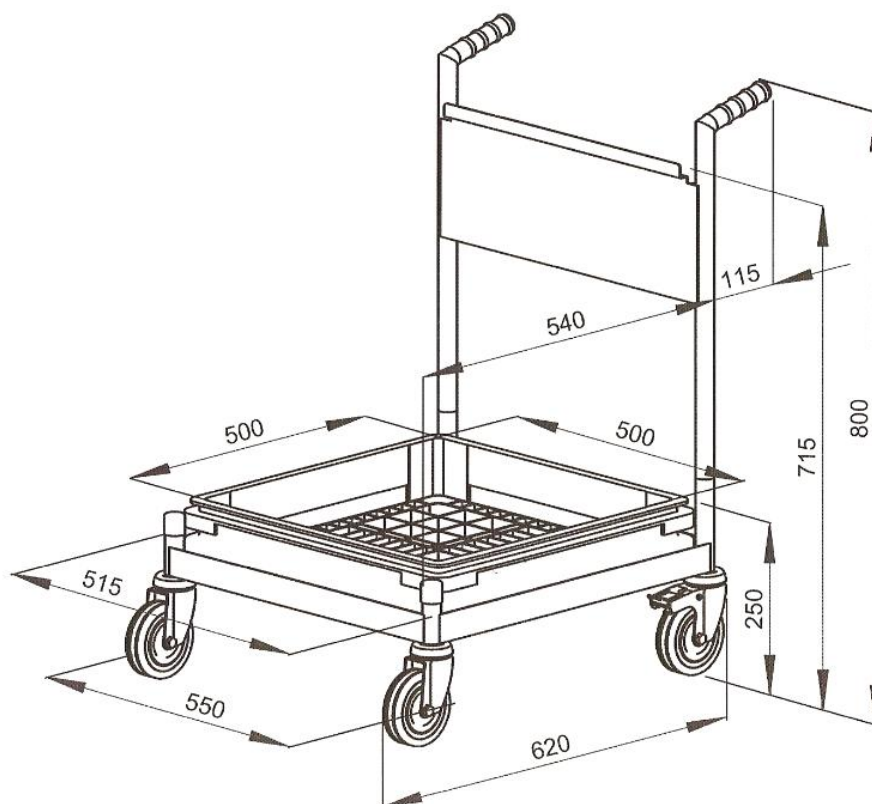
## WIRING DIAGRAM



## LAYOUT DIMENSIONS



## Assembled Unit



## Mobile Trolley



## PART LIST

Part Number	Description
A10/467	Expandable Cable Sleeve
A10/469	Rope End Stopper
A12/009	Support Spring
A12/010	Spring Motor
E64/008	Spring Balance Box
M64/001	Storage Drum Moulding
M64/002	Drum Moulding
A16/046	Hydraulic Power Pack
S64/096	Hydraulic Hose Assembly
S64/020	Head / Brush Assembly
E40/023	Spring Guard Upper
L39/010	Spindle Tube
L39/011	Spacer
E64/011	Case
E64/014	Case Cover
A21/006	Handle
D25/002	Pin
E40/014	Wall Bracket
G45/038	Rotary Switch
G45/039	Terminal Cover
A10/266	Cable Gland
A10/224	Cable Gland Locknut
G315	Expandable Cable Sleeve
G328	Straight Connector
G329	Air Tube
G45/040	Air Operated Micro switch
G45/041	Bulkhead Connector
G45/042	Foot Bellows
U07/012	Nylon Brush Head
U07/PGW2	Magikut Pads (Set of 4)
L39/009	Mandrel
E64/009	Support Hook
E64/010	Disc Retainer

## ORDERING SPARE PARTS

In the event that spare parts or accessories need to be ordered, please always quote the SERIES AND SERIAL NUMBER of the machine. This is to be found on the rating plate located near the supply cable.

For installations outside the UK please contact your supplier.

For information on IMC spares and service support (if applicable), please call IMC on +44 (0) 1978 661155. Alternatively, contact us via email or fax:

IMC Spares Desk

Fax: +44 (0) 1978 667759

E-mail: [spares@imco.co.uk](mailto:spares@imco.co.uk)

IMC Service Desk

Fax: +44 (0) 1978 667766

E-mail: [service@imco.co.uk](mailto:service@imco.co.uk)

Imperial Machine Company Limited  
Unit 1, Abbey Road  
Wrexham Industrial Estate  
Wrexham LL13 9RF

Tel: +44 (0)1978 661155

Fax: +44 (0)1978 729990

Service Fax: +44 (0)1978 667766

Spares Fax: +44 (0)1978 667759

E-mail: [info@imco.co.uk](mailto:info@imco.co.uk)

Website: [www.imco.co.uk](http://www.imco.co.uk)