



sn❄wflake

– a NEW sub-brand by Gram Commercial

**HIGH QUALITY REFRIGERATION AT ATTRACTIVE PRICES**

sn❄wflake

# At the heart of the busy professional kitchen.

In the busy world of a professional kitchen, you need to know that you can rely on your refrigerator or freezer. It must be designed to meet the needs of your kitchen for **durability** and **easy cleaning**, and include some **practical details** that ease the daily workflow:

## ❄ durability

A professional refrigerator or freezer must run and run, day in and day out. In a busy kitchen environment things move fast, and it's impossible to avoid a certain amount of heavy handed use. The product must be made to withstand that with easy access to spare parts and service should the need arise. Durability is built into **SNOWFLAKE's** fully-insulated cabinet and door, with sturdy metal inlays precisely where the wear is toughest, such as behind the hinges and shelf brackets.

## ❄ easy cleaning

It's all about providing smooth surfaces in stainless steel with as few edges and protrusions as possible, so that you can quickly get it completely clean. The tight joints and a dished base also facilitate easy cleaning. The shelves and brackets, like the door gaskets, can be removed without the use of tools and washed outside the cabinet.

## 🔍 practical details

The door is reversible and is equipped with a lock. The flexible shelf bracket system has room for seven shelves (three shelves are included as standard) and can also be used to place GN pans or sandwich trays directly onto the stainless steel anti-tilt support rails. The electronic control shows the cabinet temperature and makes it easy to adjust to the required temperature.

With its new products under the brand name **SNOWFLAKE®**, Gram meets precisely these basic requirements – while at the same time demonstrating that a product can easily be well-functioning and have a competitive price. **SNOWFLAKE®** will therefore often turn out to be the best alternative to other entry level low-cost refrigerators and freezers.

- 600 litre 2/1 GN refrigerator and freezer, designed for tough daily use in a professional environment in up to +43 °C ambient temperature
- Eco-friendly refrigerant R290 (propane) or conventional HFC refrigerants R134a/R404A
- Stainless steel surfaces on cabinet's front, sides and internal bottom pan
- Efficient air circulation system ensures uniform and stable temperature
- 3 sturdy grey plastic-coated easy-clean wire shelves, door-lock and reversible door
- Low energy consumption which compares favourably with all competitors in its class
- Free delivery and 2 year parts- and labour warranty



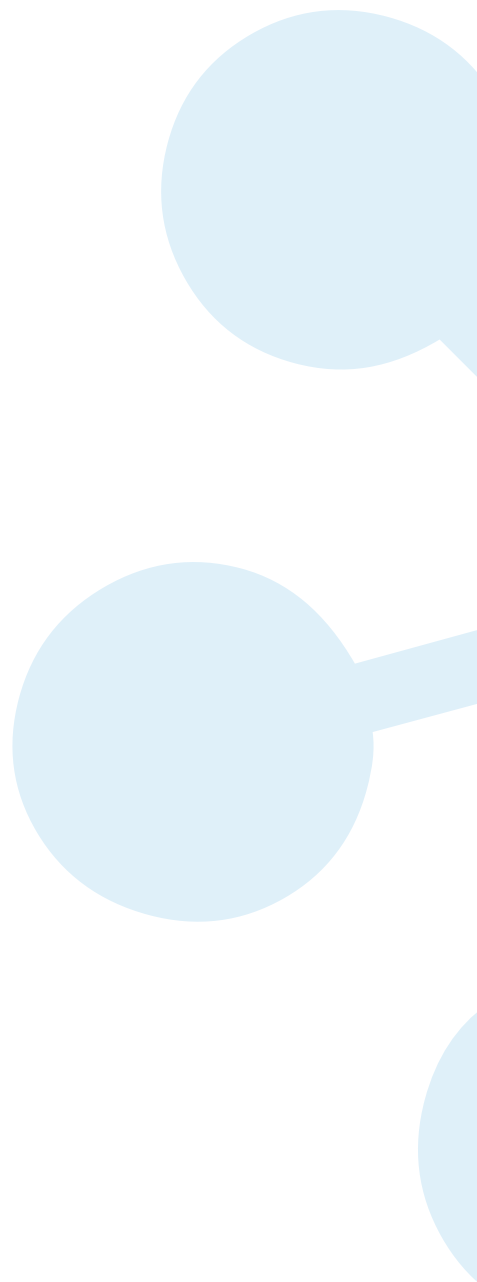
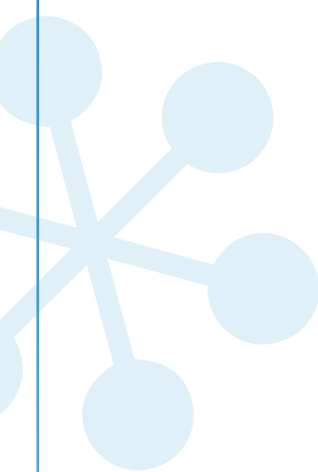
sn❄wflake

Technical specifications	SNOWFLAKE® K 605	SNOWFLAKE® F 605
Temperature range	+2/+8 °C	-22/-10 °C
W x D x H (incl. castors)	695 x 855 x 2000 mm	
Refrigerant	R290 or R134a	R290 or R404A
Volume, gross	594 ltr.	
Connection	230 V, 50/60 Hz	
Energy consumption	2.0 kWh/24h (R290)	3.0 kWh/24h (R290)
	2.1 kWh/24h (R134a)	4.2 kWh/24h (R404A)



- 1. Sturdy wire shelves** – stainless steel shelf supports and wall rails which can also accommodate 1/1 GN pans.
- 2. Accurate electronic controller** with digital temperature display.
- 3. Compressor compartment** – well designed and easily accessible.
- 4. LED lights** that come on when the door is opened. Door-lock as standard.





**sn\*flake**

---

*by Gram UK Ltd · 2 The Technology Centre · London Road, Swanley · Kent BR8 7AG  
Tel.: 01322 616900 · Fax: 01322 616901 · e-mail: info@gramuk.co.uk*