



COMBI CK-401

2 in 1: large production veg prep machine (650 kg/h) with 5 lt. / 5 1/4 qt. cutter bowl



DYNAMIC PREPARATION
FOOD PROCESSOR / VEG PREP COMBI MACHINES



SALES DESCRIPTION

It consists of a variable speed motor block with a large production hopper and a 5 litre / 5 1/4 qt. food processor bowl complete with a hub with serrated blades.

FEATURES AND BENEFITS

As vegetable preparation machine, its lateral blade distributes products in the hopper, cutting and distributing full products like cabbage. It is supplied complete with an optional core drill for the same purpose. The hopper is equipped with a high positioned ejector disc allowing to eject a bigger product quantity.

Discs are not included*.

- ✓ User-friendly, waterproof led-lit control panel.
- ✓ Hopper, lid and bowl easily detachable for interchanging or cleaning.
- ✓ Automatic hopper detection.

AS VEGETABLE PREPARATION MACHINE:

- ✓ Machine and discs specially designed to obtain the perfect cut.
- ✓ Adjustable speed (5 positions).
- ✓ Ergonomic design.
- ✓ Central blade to slice open larger food products: maximum efficiency.
- ✓ Lateral shootout: needs less counter space and allows a more natural workflow (left to right).
- ✓ High profile ejection disc for larger output.

AS FOOD PROCESSOR

- ✓ Adjustable speed (10 positions), programmable by time and pulse switch.
- ✓ 5 qt. stainless steel food processor bowl.
- ✓ Polycarbonate lid complete with scraper that allows consistent and homogeneous mixing and avoids product overheating.
- ✓ Optional flat blade set for raw meat and fibrous products.
- ✓ Optional perforated blade set specially designed to beat and mix.

INCLUDES

- ✓ Variable speed motor block.
- ✓ Large capacity hopper.
- ✓ Food processor bowl complete with hub with serrated blades.



www.sammic.co.uk

Food Service Equipment Manufacturer

Unit 2, Trevanah Road
Troon Industrial Park
LE4 9LS - Leicester

uksales@sammic.com
Tel.: +44 0116 246 1900



Project

Date

Item

Qty

Approved

product sheet
updated 06/03/2018



COMBI CK-401

2 in 1: large production veg prep machine (650 kg/h) with 5 lt. / 5 1/4 qt. cutter bowl



SPECIFICATIONS

Total loading: 1500 W

As vegetable preparation machine

Hourly production: 200 Kg - 650 Kg

Inlet opening: 286 cm2

Disc diameter: 205 mm

Speeds as veg. slicer (positions): 5 (365 rpm - 1000 rpm)

External dimensions (WxDxH): 389 mm x 400 mm x 767 mm

Net weight: 30 Kg

As cutter

Bowl capacity: 5 l

Speeds as cutter (positions): 10 (365 rpm - 3000 rpm)

External dimensions (WxDxH): 283 mm x 390 mm x 468 mm

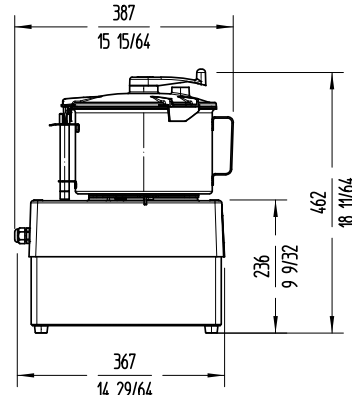
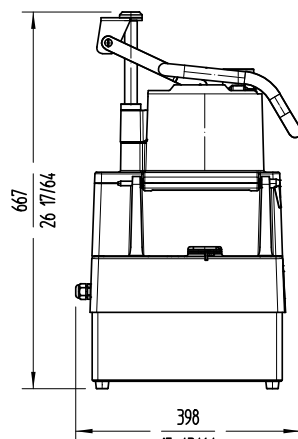
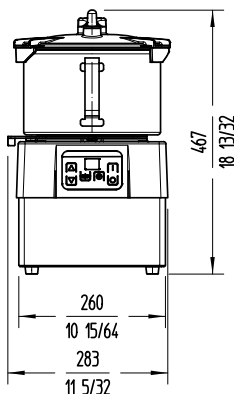
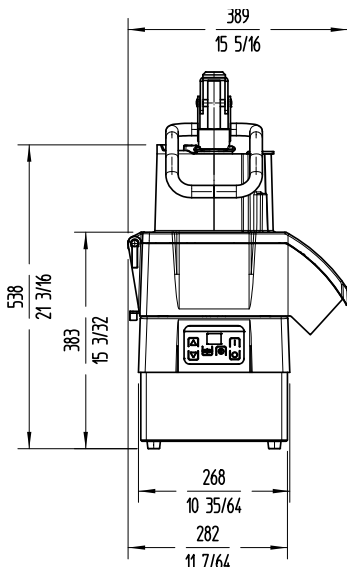
Net weight (Cutter): 23 Kg.

Noise level (1m.): <70 dB(A)

Background noise: 32 dB(A)

Crated dimensions

420 x 420 x 690 mm



AVAILABLE MODELS

1050330 Combi vegetable prep.-cutter CK-401 230/50-60/1

* Ask for special versions availability

ACCESSORIES

- | | |
|--|---|
| <input type="checkbox"/> FC Slicing Disc | <input type="checkbox"/> FMC Dicing Grids |
| <input type="checkbox"/> FCC Curved Slicing Discs | <input type="checkbox"/> FCE Julienne Discs |
| <input type="checkbox"/> FCO Rippled Slicing Discs | <input type="checkbox"/> FR Shredding & Grating Discs |
| <input type="checkbox"/> FF Chipping Grids | <input type="checkbox"/> Long vegetable attachment |
| <input type="checkbox"/> FM Dicing Grids | <input type="checkbox"/> Disc and Grid Holder Device |
| <input type="checkbox"/> FFC Chipping Grids | |



www.sammic.co.uk

Food Service Equipment Manufacturer

Unit 2, Trevanah Road
Troon Industrial Park
LE4 9LS - Leicester

uksales@sammic.com
Tel.: +44 0116 246 1900



Project

Date

Item

Qty

Approved