

# D500DUO Undercounter Dishwasher

Technical Specifications



**CLASSEQ**  
Warewashing Made Simple.

# D500DUO

Front-loading commercial dishwasher with a digital display, three wash programs and WRAS compliance for effortless and consistently clean results.

The D500DUO is an easy to operate, under counter dishwasher with a 500 x 500mm basket that holds 18 full-sized plates. It features three wash cycles standard (3min), heavy (5min) and intense (8min) - ensuring that it is optimised for cleaning some of the toughest warewashing requirements.

The digital LCD display accurately shows the temperature of the wash tank and rinse boiler, re-assuring the operator that it is up to temperature and fully sanitising during the wash cycle.

With intuitive colour coded lighting and universally recognised symbols, this machine has been designed to make operating as simple as possible, whilst also featuring performance enhancing customisations through its advanced settings mode. Additionally, its clever software constantly monitors wash cycles, temperatures, chemical usage and any errors giving valuable data which is used to improve operational efficiencies.

The Duo range of products all come with drain pumps, rinse booster pumps, built in chemical dispensers and full double skinned construction ensuring they meet all installation regulations and requirements. All Duo models are also available with an optional water softener – an essential requirement in hard water areas. (D500DUOWS)



**Optional Water Softener**  
Our D500DUO is also available with an integral water softener.  
Model code: D500DUOWS.



### Locally manufactured

Our machines are Made in Britain (Staffordshire) meaning shorter lead times on delivery, parts and support.



### LCD display

The D500DUO enhances user functionality by displaying rinse and wash tank temperatures.



### Water Board (WRAS) compliant

All Duo machines are fully compliant with essential Water Board regulations.



### Colour Coded Display

Amber flashing - Machine heating  
Blue - Machine in cycle  
Green - Machine ready



### 3 Wash Programs

The D500DUO Standard (3 min), heavy (5min) and intensive (8min) cycles allow for maximum output without compromising wash quality.



### Double skinned sides and door

Allows for quieter operation and reduced heat loss.



### Advanced Customer Features

Adjust rinse aid and detergent settings, priming of chemical pumps and set water softener to match local water hardness levels (WS models only).



### Operational Data monitoring

Our machine constantly measures all cycles, heating and errors providing useful data for improving efficiencies.

## Machine Features:

1 500mm x 500mm basket	2 Built-in chemical pumps	3 Drain pump	4 Rinse Booster Pump	5 Temperature interlock - guarantees hot rinse
6 Energy saving standby mode	7 Stainless steel dual wash filter system	8 Assisted self-clean	9 Easily removable components	

## Hydraulic specifications

Water supply connection	G3/4" (3/4" BSP)
Minimum allowed supply water pressure	0.5 bar D500DUO model only 2.0 bar D500DUOWS model only
Required water flow rate	11 L/min D500DUO model only 4 L/min D500DUOWS model only
Minimum incoming water temperature	4°C
Maximum incoming water temperature	55°C
Gravity drain height (from machine base)	40 mm D500DUO model only N/A D500DUOWS model only
Pumped drain height (from machine base)	600 mm
Drain size	Ø40 mm

## Electrical specifications

### Standard Set-up

Amps Required	30A (1 phase)
Standard Operating Voltage	220-240V / 1N~ / 50Hz
Total Connected Load	6.58kW

### Optional Set-up

Amps Required	13A (3 phase)
Standard Operating Voltage	380-415V / 3N~/50Hz
Total Connected Load	6.58kW

### Optional Set-up

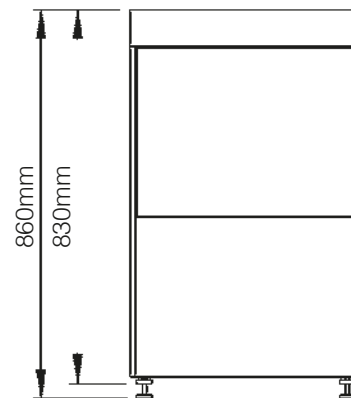
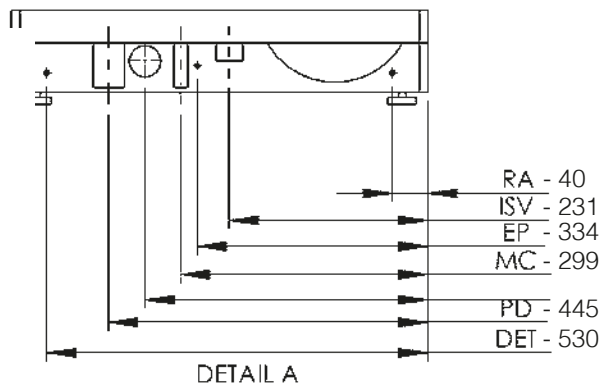
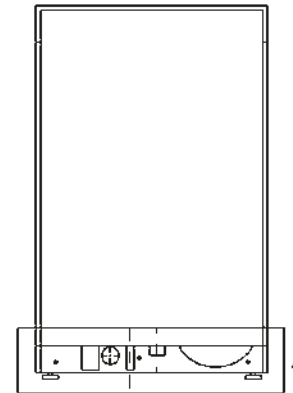
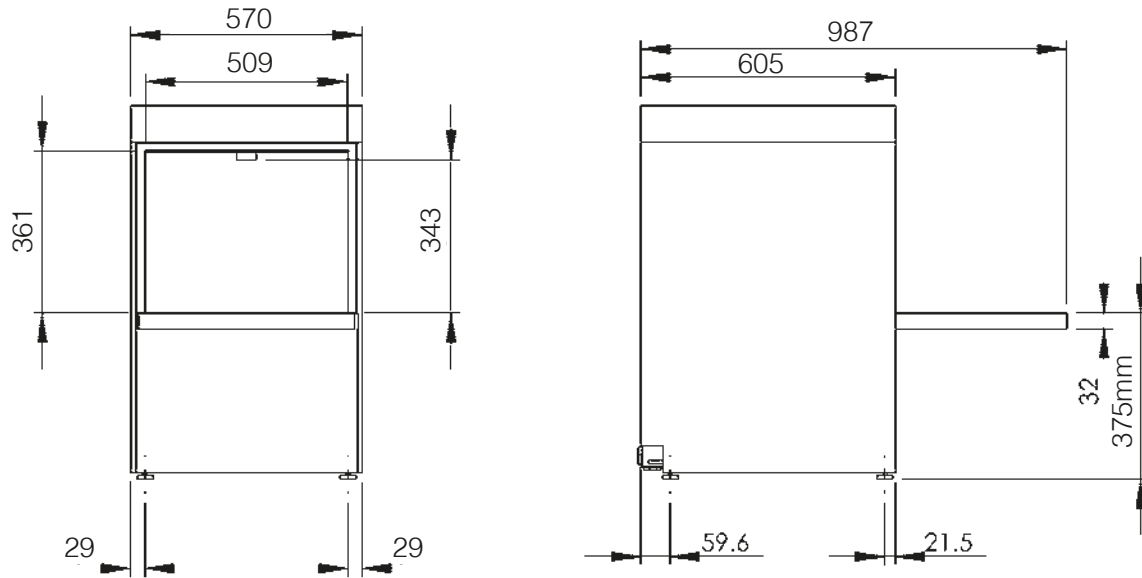
Amps Required	12A (1 phase)
Standard Operating Voltage	220-240V / 1N~ / 50Hz
Total Connected Load	2.58kW

## Performance

Wash tank element	2.00kW
Rinse tank element	6.00kW
Wash tank capacity	14.33 litres
Rinse tank capacity	7.5 litres
Rinse water consumption at 3 bar	3.00 L/cycle
Theoretical maximum racks/hours	20
Wash tank temperature	55°C
Rinse tank temperature	82°C
Wash pump power	0.58 kW
Rinse pump power	0.19 kW

**Please Note:** D500DUOWS Specification as above.

# Mechanical Specifications



## Additional Info:

	<b>D500DUO</b>
Wash water temperature	<b>55°C</b>
Dish Washer rinse temperature	<b>82°C</b>
Noise level	<b>Under 70dB</b>
Empty weight	<b>54.7kg</b>
Fully Loaded weight	<b>75.2kg</b>
Packed weight	<b>68.3kg DUO model 70.4kg DUOWS model</b>

## Dimensions (mm):

570 (W) x 830 (H) (860 max) x 605 (D)

Description	Symbol	Radius from machine (m)
Rinse aid tube	RA	3
Inlet solenoid value	ISV	1.8
Mains electrical cable	EC	1.3
Pumped waster water outlet	PD	1.5
Equipotential bonding stud	EP	-
Detergent tube	DET	3

Please Note: All dimensions in mm

## Contact:

Tel: +44 (0)844 225 9250  
Email: sales@classeq.co.uk

Classeq Ltd, Roebuck Way,  
Knowlhill, Milton Keynes MK5 8WH

www.classeq.co.uk

**CLASSEQ**  
Warewashing Made Simple.