



BURCO MANUAL FILL PLUG AND GO BOILER 10L STAINLESS STEEL



- ✓ **Unique patented locking tap design** so you can switch from constant flow to one that you control.
- ✓ **Flush lid handle with fingertip guard** for extra safety against hot surfaces and steam.
- ✓ **Robust, easy clean stainless steel construction** ensures minimum maintenance.
- ✓ **Heating element is fitted with thermal cut-out** protects the boiler from damage if it is allowed to boil dry or is switched on without water.
- ✓ **CE marked and EMC tested** for reassurance and peace of mind.
- ✓ **13amp power supply** plug in and get pouring.
- ✓ **Made in Britain**

SKU CODE:

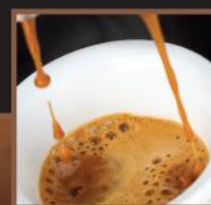
PRODUCT CODE:

DESCRIPTION:

444448528

MFCT10ST

Burco Manual Fill Plug and Go Boiler 10L Stainless Steel



FULL SPECIFICATION – MFCT10ST Burco Manual Fill Plug and Go Boiler 10L Stainless Steel

SKU code	444448528
GDPA code	MFCT10ST
Capacity (L)	10
Unit external width (mm)	300
Unit external depth (mm)	335
Unit external height (mm)	380
Packed width (mm)	345
Packed depth (mm)	345
Packed height (mm)	405
Product weight (kg)	3
Packed weight (kg)	3.8
Colour	Stainless Steel
Heat up time (mins)	25
Tap Height (mm)	115
Concealed element	Yes
Variable thermostat	Yes
Carry Handles	Yes
Boil dry safety cut-out	Yes
Power rating (kW)	3
Voltage supply (V)	220/240
UK 3 pin plug	Yes
Fitted cable length (m)	1.7
Piezo ignition	-
Securable feet	-
Energy consumption	1kW (per hour)