



**INSTALLATION and SERVICING INSTRUCTIONS for  
LD115 and LD117 HOTCUPBOARDS  
LD118 and LD119 AMBIENT CUPBOARDS**

**CAUTION: Read the instructions before using the appliance.**

**Important Installation Information**

The installer must ensure that installation of the unit(s) is in conformity with regulations in force at the time. For the UK, particular attention requires to be paid to:-

**BS7671 IEE Wiring Regulations**

**Electricity at Work Regulations**

**Health and Safety at Work Act**

**Fire Precautions Act**

The unit has been CE-marked on the basis of compliance with the Low Voltage and EMC Directives for the voltage stated on the data plate.

**WARNING: THIS APPLIANCE MUST BE EARTHED!**

**Preventive Maintenance Contract**

In order to obtain maximum performance from the equipment, we would recommend that a maintenance contract be arranged with Serviceline. Visits may then be made at agreed intervals to carry out adjustments and repairs. A quotation for this service will be provided upon request. Contact Serviceline as detailed below:-

**Tel: 01438 363 000      Fax: 01438 369 900**



**WEEE Directive Registration No. WEE/DC0059TT/PRO**

**At end of unit life, dispose of appliance and any replacement parts in a safe manner, via a licenced waste handler. Units are designed to be dismantled easily and recycling of all material is encouraged whenever practicable.**

**Falcon Foodservice Equipment**

Wallace View, Hillfoots Road, Stirling. FK9 5PY. Scotland.

e-mail: [info@falconfoodservice.com](mailto:info@falconfoodservice.com)

**T100332 Ref. 5**

# IMPORTANT INFORMATION

## Warranty Policy Shortlist

Warranty does not cover :-

- Correcting faults caused by incorrect installation of a product.
- Where an engineer cannot gain access to a site or a product.
- Repeat commission visits.
- Replacement of any parts where damage has been caused by misuse.
- Engineer waiting time will be chargeable.
- Routine maintenance and cleaning.
- Gas conversions i.e. Natural to Propane gas.
- Descaling of water products and cleaning of water sensors where softeners/ conditioners are not fitted, or are fitted and not maintained.
- Blocked drains
- Independent steam generation systems.
- Gas, water and electrical supply external to unit.
- Light bulbs
- Re-installing vacuum in kettle jackets.
- Replacement of grill burner ceramics when damage has been clearly caused by misuse.
- Where an engineer finds no fault with a product that has been reported faulty.
- Re-setting or adjustment of thermostats when unit is operating to specification.
- Cleaning and unblocking of fryer filter systems due to customer misuse.
- Lubrication and adjustment of door catches.
- Cleaning and Maintenance
  - Cleaning of burner jets
  - Poor combustion caused by lack of cleaning
  - Lubrication of moving parts
  - Lubrication of gas cocks
  - Cleaning/adjustment of pilots
  - Correction of gas pressure to appliance.
  - Renewing of electric cable ends.
  - Replacement of fuses
  - Corrosion caused by use of chemical cleaners.

## Electrical Safety and Advice Regarding Supplementary Electrical Protection

Commercial kitchens and foodservice areas are environments where electrical appliances may be located close to liquids, or operate in and around damp conditions, or where restricted movement for installation and service is evident.

The installation and periodic inspection of the appliance should only be undertaken by a qualified, skilled and competent electrician; and connected to the correct power supply suitable for load as stipulated by the appliance data label.

The electrical installation and connections should meet the necessary requirements to local electrical wiring regulations and electrical safety guidelines.

### **We recommend:-**

- Supplementary electrical protection with use of a residual current device (RCD).
- Fixed wiring appliances incorporate a locally situated switch disconnector to connect to, which is easily accessible for switching off and safe isolation purposes. The switch disconnector must meet the specification requirements of IEC 60947.

## Technical Installation Information Table

Model	Width	Depth	Height	Power Rating	Fuse rating	Weight
LD115	300mm	550mm	650mm	0.48kW	3A	20kg
LD117	600mm	550mm	650mm	0.48kW	3A	31kg
LD118	300mm	550mm	650mm	-	-	18kg
LD119	450mm	550mm	650mm	-	-	25kg

### SECTION 1 – SITING

PRO-LITE models have been designed in a modular form which consists of base, counter and free-standing units.

Information relating to individual models is listed in table above.

The unit should be installed upon a firm, level surface and adjustable feet are provided for levelling purposes.

Vertical and horizontal clearances required from the top and sides of a particular unit to any overlying combustible surface (ie wall, partition, etc) are listed in Table 1. Relevant fire regulations must be complied with.

#### Mounting Counter Units upon a Hot cupboard/Ambient Cupboard

PRO-LITE hot cupboards are designed to be used in conjunction with counter models. Assembly is achieved by means of two shouldered fixings being applied to the underside of a top unit from inside a base appliance as detailed in Figure 1.

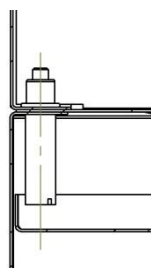
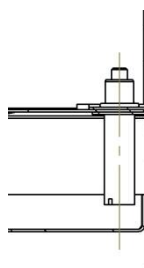


Figure 1 – Front View



### SECTION 2 - ELECTRICAL SUPPLY AND CONNECTION

#### HOTCUPBOARDS ONLY

Electrical ratings are as stated on the unit data plate. The listing in Table 1 is based on standard UK specification at 230V~.

Wiring must be executed in accordance with the regulations listed in this booklet.



**WARNING: Each individual appliance must be earthed!**

The appliance is also provided with a terminal for the connection of an external equipotential conductor. This terminal is in effective electrical contact with all fixed exposed metal parts of the appliance, and shall allow the connection of a conductor having a nominal cross-sectional area of up to 10 mm<sup>2</sup>. It is located on the rear panel and is identified by the following label and must only be used for bonding purposes.



After completion of installation, the method of operation should be demonstrated to the kitchen staff. The isolating switch location, for use in an emergency or during cleaning should also be pointed out.

### **LD115 and LD117 HOTCUPBOARDS**

These models are designed to be connected to a single phase AC supply using the 2 metre mains lead fitted as standard.

**Check that no damage has occurred to the appliance, power cable and plug top during transit. If damage has occurred do not use the appliance.**

**Ensure that the mains power cable is routed free from the appliance to avoid damage.**

**We recommend supplementary electrical protection with the use of a residual current device (RCD). Periodic testing, repair and fixed wiring connection should only be undertaken by a skilled and competent electrician.**

Wires are coloured in accordance with the following code and should be connected to the plug as follows:

**EARTH** to terminal marked **E** or coloured **GREEN** or **GREEN/YELLOW**.

**NEUTRAL** to terminal marked **N** or coloured **BLACK**.

**LIVE** to terminal marked **L** or coloured **RED**.

Units which receive power from a plug, adaptor or distribution board must be individually protected by a fuse with an appropriate rating. (See Table 1)

Any replacement supply cable must be 1.5mm<sup>2</sup>, cord code designation 245 IEC 57 (CENELEC H05 RN-F).

For internal connection, outer sheathing must be stripped 140mm from the cable end. The live and neutral conductors must be trimmed so that the Earth conductor is longer by 50mm. Pass inlet cable through the rear panel cord grip and ensure that the cable is routed without leaving excessive free length inside the appliance.

## SECTION 3 - USING AND CLEANING PRO-LITE UNITS



### **IMPORTANT: GENERAL NOTES ON CLEANING**

Disconnect unit from electricity supply prior to cleaning

Never use a coarse abrasive to clean exterior panels. A soft cloth with a warm water and detergent solution is sufficient.

Never attempt to steam clean a unit or hose it down with a jet of water.

### **LD115 and LD117 HOTCUPBOARDS**

#### **Using a Hotcupboard Operating Switch**



**Figure 3**

The neon is illuminated when the switch (Figure 2) is in the ON position supplying power to the element. The cupboards are fitted with spring-loaded door hinges to ensure minimum heat loss when in operation. When loading/unloading, do not leave doors open longer than necessary.

#### **Cleaning a Hotcupboard/Ambient Cupboard**

When cool, clean with a detergent/water solution and dry thoroughly. Stubborn stains may be removed with soap filled steel pads but care should be taken when cleaning stainless steel surfaces. Never use harsh abrasives on such a finish. Shelves can be removed for cleaning. However, the lower shelves of heated cupboards are fixed and must be cleaned in position. Ensure no excess water runs into the element and terminal compartments.

## SECTION 4 – SERVICING

### **LD115 and LD117 HOTCUPBOARDS**

#### **SERVICE ACCESS**

##### **Chamber Base Plate**

Undo base plate fixings from inside chamber and lift base away from the unit.

##### **Control Switch Access - Removing the Hob Unit(s)**

Undo hob unit(s) fixings from inside the chamber and lift away the hob unit.

#### **DOOR ITEMS**

##### **Removing the Door**

Undo spring hinge fixings and remove.

Replace in reverse order, ensure the doors align correctly.

### **Door Handle**

Remove the door as detailed above.

Drill out pop rivets on the door edges and separate the door halves.

Undo the handle fixings and remove the handle.

Replace in reverse order.

## **FUNCTIONAL COMPONENTS**

### **Operating Switch/Neon**

Remove hob unit(s).

Remove the electrical connections noting their positions.

Unclip the switch module spring clips and push the module out.

Replace in reverse order.

### **Elements**

Remove chamber base panel.

Undo the electrical connections noting their positions.

Undo element fixings and remove element.

Replace in reverse order.

### **Terminal Block**

Remove chamber base panel.

Remove electrical connections from the terminal block, noting their positions.

Undo block fixings and remove.

Replace in reverse order.

### **Cable**

Remove chamber base plate.

Undo the mains cable cord grip at the rear of the unit.

Undo electrical connections at terminal block and remove cable.

Replace in reverse order. Ensure that the cable is led through the securing clamp and is pulled taut before clamp is tightened.

## **PRO-LITE SHORT SPARES**

### **LD115 and LD117 Hotcupboards**

535500038	Switch
735240004	Neon Red
735300001	Element

## LD115/117 WIRING DIAGRAM

