



Please read and comply with these original instructions prior to the initial operation of your appliance and store them for later use or subsequent owners.

- Before first start-up it is definitely necessary to read the safety indications Nr. 5.956-249!
- The non-compliance of the operating and safety instructions may lead to damages of the appliance and to dangers for the operator and other persons.
- In case of transport damage inform vendor immediately
- When unpacking the product, make sure that no accessories are missing and that none of the package contents have been damaged.

Contents

Environmental protection	EN	1
Danger or hazard levels	EN	2
Proper use	EN	2
Safety instructions	EN	2
Device elements	EN	3
Start up	EN	4
Operation	EN	4
Transport	EN	4
Storage	EN	4
Maintenance and care	EN	4
Troubleshooting	EN	5
Warranty	EN	6
Accessories and Spare Parts .	EN	6
EC Declaration of Conformity .	EN	6
Technical specifications	EN	7

Environmental protection

	The packaging material can be recycled. Please do not throw the packaging material into household waste; please send it for recycling.
	Old appliances contain valuable materials that can be recycled; these should be sent for recycling. Batteries, oil, and similar substances must not enter the environment. Please dispose of your old appliances using appropriate collection systems.

Notes about the ingredients (REACH)

You will find current information about the ingredients at:

www.kaercher.com/REACH

Danger or hazard levels

⚠ DANGER

Immediate danger that can cause severe injury or even death.

⚠ WARNING

Possible hazardous situation that could lead to severe injury or even death.

⚠ CAUTION

Pointer to a possibly dangerous situation, which can lead to minor injuries.

ATTENTION

Pointer to a possibly dangerous situation, which can lead to property damage.

Proper use

⚠ WARNING

The appliance is not suitable for vacuuming dust which endangers health.

ATTENTION

This unit is only to be used indoors.

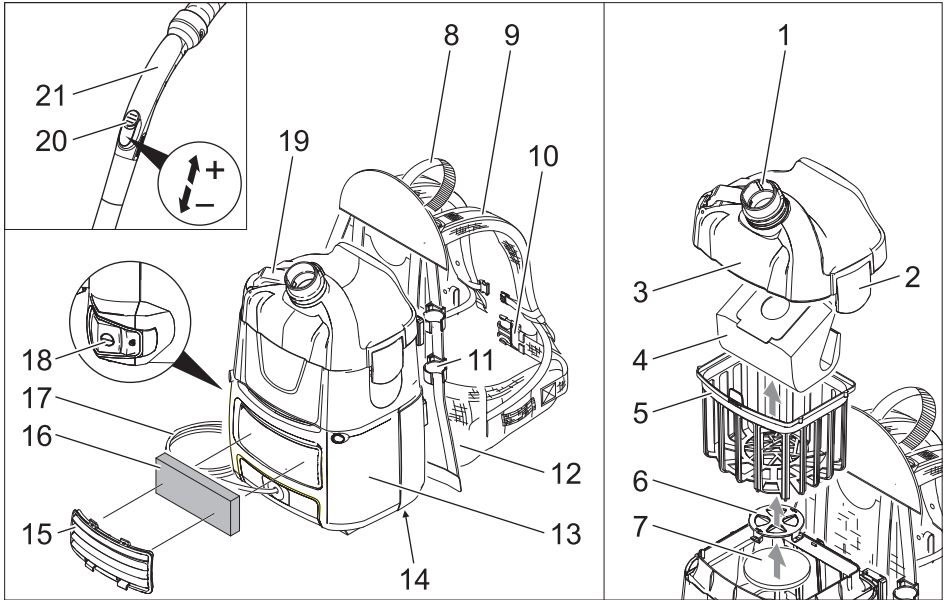
- This universal vacuum cleaner is intended for dry cleaning of floor and wall surfaces.
- This appliance is suited for the commercial use, e.g. in hotels, schools, hospitals, factories, shops, offices, and rental companies.

Safety instructions

⚠ DANGER

- *If you are wearing a pacemaker, we recommend that you contact your physician or the manufacturer of the pacemaker regarding possible cautions before you operate this appliance.*
- *Not all pacemakers are radiation-proof to emitted high frequency/electrical magnetic fields in a close vicinity, which could lead to problems while operating this appliance.*
- *If your physician is not able to guarantee its flawless operation, do not use this appliance!*

Device elements



- 1 Suction support (exterior)
- 2 Filter cover latch
- 3 Filter cover
- 4 Fleece filter bag
- 5 Main filter basket
- 6 Grid of the motor protection filter
- 7 Motor protection filter
- 8 Handle
- 9 Shoulder carrier with middle and end tensioners
- 10 Hip belt
- 11 Suction pipe holder
- 12 Back cushion
- 13 Casing
- 14 Nameplate
- 15 Cover
- 16 Exhaust filter
- 17 Power cord
- 18 Main switch
- 19 Mains cable hook (foldable)
- 20 Suction force regulator (continuous)
- 21 Bender

Colour coding

- The operating elements for the cleaning process are yellow.
- The controls for the maintenance and service are light gray.

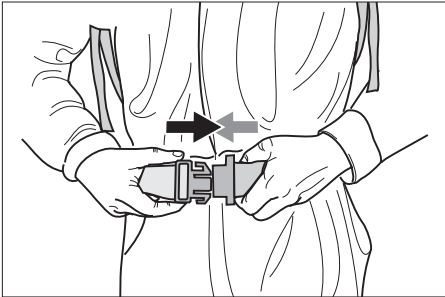
Start up

The appliance can be operated in 2 ways:

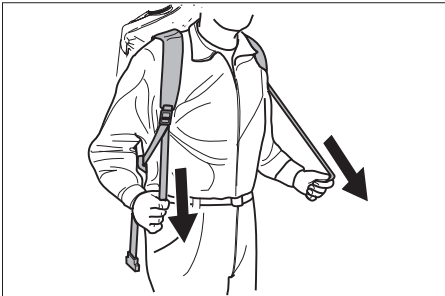
- 1 Operation with fleece filter bag or paper filter bag (option)
 - 2 Operation without filter bag
- Check whether main filter basket has been inserted into the appliance.

Adjusting the hip belt and the shoulder carrier

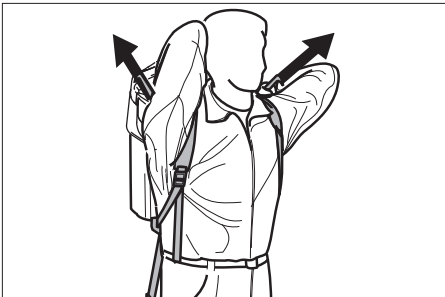
- Put appliance on your back.



- Latch the closure and adjust the hip belt.



- Adjust the appliance to your body by pulling on the middle tensioners. Do not pull too tight, the main load should be on the hip belt.



- Adjust the position of the appliance on your back by pulling on the end tensioners.

Operation

ATTENTION

Risk of damage! If the suction decreases, immediately turn off the motor.

Turning on the Appliance

- Plug in the mains plug.
→ Switch on the appliance at the main switch.

Cleaning operations

- Set the selection switch of the floor nozzle to hard surface or carpet.
→ Regulate the suction force on the suction force regulator (continuous).
→ Perform the cleaning operation.

Turn off the appliance

- Switch off the appliance at the main switch.
→ Pull out the mains plug.

After each operation

- Empty main filter basket if necessary.
→ Use a moist cloth to clean the appliance, the accessories and the cable after use.

Transport

⚠ CAUTION

Risk of injury and damage! Observe the weight of the appliance when you transport it.

- When transporting in vehicles, secure the appliance according to the guidelines from slipping and tipping over.

Storage

⚠ CAUTION

Risk of injury and damage! Note the weight of the appliance in case of storage.

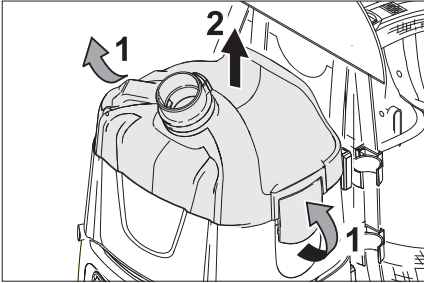
This appliance must only be stored in interior rooms.

Maintenance and care

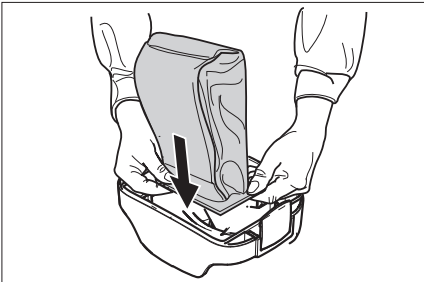
⚠ DANGER

First pull out the plug from the mains before carrying out any tasks on the machine.

Replace the fleece filter bag or paper filter bag (option)



- Release and remove the filter cover.
- Remove the fleece filter bag or paper filter bag (option).



- Pull a new fleece filter bag or paper filter bag (option) with rubber flange over the suction support (interior).
- Insert and lock the filter cover.

Clean main filter basket

- Main filter basket (washable), clean it under running water if necessary.

ATTENTION

Risk of damage! Never insert the main filter basket while wet.

Replace exhaust filter

Exhaust filter: Change once a year

- Remove cover.
- Unlock the exhaust filter and remove.
- Insert and lock the new exhaust filter into place.
- Replace cover.

Replace motor protection filter

- Release and remove the filter cover.
- Remove the main filter basket.

- Push the grids of the motor protection filter down, turn and remove.
- Remove the motor protection filter.
- Insert the new motor protection filter.
- Insert the grid of the motor protection filter and lock it into place.
- Insert main filter basket.
- Insert and lock the filter cover.

Troubleshooting

⚠ DANGER

First pull out the plug from the mains before carrying out any tasks on the machine.

Note: In case of a failure (e.g. filter breakage) the appliance must be turned off immediately. The failure must be remedied before the appliance is put into operation again.

The appliance shuts off during the operation

- Motor thermal protector has responded.
 - Replace the fleece filter bag or paper filter bag (option).
 - Replace motor protection filter.
 - Check all parts for plugging.
- Switching back on after the motor turbine has cooled off, after approx. 30 to 40 minutes.

Dust comes out while vacuuming

- Replace the defective fleece filter bag or paper filter bag (option).
- Check the fleece filter bag or paper filter bag (option).
- Insert/lock the filter cover correctly.
- Insert undamaged main filter basket.
- Reinsert motor protection filter correctly.

Suction capacity decreases

- Replace the fleece filter bag or paper filter bag (option).
- Clean the main filter basket under running water.
- Insert/lock the filter cover correctly.

No or insufficient suction

- Remove choking of suction nozzle, suction tube or suction hose.
- Replace defective suction hose.

- Replace the fleece filter bag or paper filter bag (option).
- Insert/lock the filter cover correctly.
- Clean the main filter basket under running water.
- Insert undamaged main filter basket.
- Replace motor protection filter.

Suction turbine does not run

- Check the receptacle and the fuse of the power supply.
- Check the power cable and the power plug of the device.
- Turn on the appliance.

Customer Service

If malfunction can not be fixed, the device must be checked by customer service.

Warranty

The warranty terms published by the relevant sales company are applicable in each country. We will repair potential failures of your appliance within the warranty period free of charge, provided that such failure is caused by faulty material or defects in manufacturing. In the event of a warranty claim please contact your dealer or the nearest authorized Customer Service centre. Please submit the proof of purchase.

Accessories and Spare Parts

- Only use accessories and spare parts which have been approved by the manufacturer. The exclusive use of original accessories and original spare parts ensures that the appliance can be operated safely and trouble free.
- At the end of the operating instructions you will find a selected list of spare parts that are often required.
- For additional information about spare parts, please go to the Service section at www.kaercher.com.

EC Declaration of Conformity

We hereby declare that the machine described below complies with the relevant basic safety and health requirements of the

EU Directives, both in its basic design and construction as well as in the version put into circulation by us. This declaration shall cease to be valid if the machine is modified without our prior approval.

Product: Dry vacuum cleaner
Type: 1.394-xxx

Relevant EU Directives
 2006/42/EC (+2009/127/EC)
 2004/108/EC
 2011/65/EU
 2009/125/EC

Applied harmonized standards

EN 55014–1: 2006+A1: 2009+A2: 2011
 EN 55014–2: 1997+A1: 2001+A2: 2008
 EN 60335–1
 EN 60335–2–69
 EN 61000–3–2: 2006+A1: 2009+A2: 2009
 EN 61000–3–3: 2013
 EN 62233: 2008
 EN 50581
 EN 60312: 2013

Applied national standards

-

Applied regulations

666/2013

5.957-678

The undersigned act on behalf and under the power of attorney of the company management.



H. Jenner
CEO




S. Reiser
Head of Approbation

Authorised Documentation Representative
S. Reiser

Alfred Kärcher GmbH Co. KG
 Alfred-Kärcher-Str. 28 - 40
 71364 Winnenden (Germany)
 Phone: +49 7195 14-0
 Fax: +49 7195 14-2212

Winnenden, 2014/02/01

Technical specifications

		BV 5/1
Mains voltage	V	220-240
Frequency	Hz	1~ 50/60
Container capacity	l	5
Air volume (max.)	l/s	61
Negative pressure (max.)	kPa (mbar)	24,4 (244)
Protective class		II
Suction hose connection (C-DN/C-ID)	mm	32
Length x width x height	mm	400 x 320 x 540
Typical operating weight	kg	6,5
Max. ambient temperature	°C	+40
Values determined to EN 60335-2-69		
Sound pressure level L_{pA}	dB(A)	62
Uncertainty K_{pA}	dB(A)	1
Hand-arm vibration value	m/s ²	<2,5
Uncertainty K	m/s ²	0,2
Eco design as per 666/2013		
Energy efficiency category	--	E
Indicative annual energy consumption	kWh/a	47,8
Carpet cleaning class	--	D
Hard floor cleaning class	--	D
Dust emission class	--	B
Sound power level L_{WA}	dB(A)	78
Rated power input	W	1150
Power cord	H05VV-F 2x1,0 mm ²	
	Part no.:	Cable length
EU	6.649-372.0	15 m
GB	6.649-503.0	15 m
CH	6.649-500.0	15 m