



BURCO MANUAL FILL GAS DELUXE WATER BOILER 20L STAINLESS STEEL



- ✓ **Unique patented locking tap design**
so you can switch from constant flow to one you control.
- ✓ **Safety flame supervision device**
- ✓ **Securable feet for fixed installation**
ideal for mobile caterers.
- ✓ **Dual wall technology**
uses the gases as well as the flame to heat the water for enhanced efficiency and speed of boiling.
- ✓ **Robustly constructed from stainless steel**
for maximum durability.
- ✓ **Flat interior**
makes cleaning and descaling easier.
- ✓ **Piezo ignition**
for ease of use and safety.

SKU CODE:

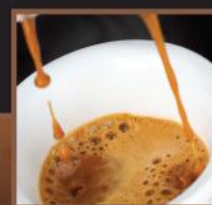
PRODUCT CODE:

DESCRIPTION:

444448539

MFGS20DX

Burco Manual Gas Deluxe Water Boiler 20L Stainless Steel



FULL SPECIFICATION – MFGS20DX Burco Manual Fill Gas Deluxe Water Boiler 20L Stainless Steel

SKU code	444448539
GDPA code	MFGS20DX
Capacity (L)	20
Unit external width (mm)	405
Unit external depth (mm)	415
Unit external height (mm)	555
Packed width (mm)	605
Packed depth (mm)	410
Packed height (mm)	425
Product weight (kg)	7
Packed weight (kg)	8.6
Colour	Stainless Steel
Heat up time (mins)	50
Tap Height (mm)	180
Concealed element	-
Variable thermostat	-
Carry Handles	-
Boil dry safety cut-out	No
Power rating (kW)	-
Voltage supply (V)	-
UK 3 pin plug	Yes
Fitted cable length (m)	-
Piezo ignition	Yes
Securable feet	Yes