

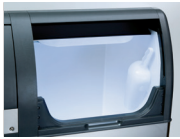
Self Contained Ice Machine up to 160 Kg



Features

- Produces granular shape ice flakes, 80% hardness
- Up to 160 kg (352 lbs) daily production
- Up to 60 kg (132 lbs) ice storage capacity
- Ice scoop holder safely positioned in ice-storage bin
- Resistant stainless steel exterior
- Advanced diagnostics computerized control
- Front panel in & out airflow (air-cooled model only) for built-in installation
- Front access condenser air filter, removable and washable (air cooled version only)
- Easily accessible, front panel mount, ON-OFF Switch
- Easy, front panel access to technical / service area of the machine
- Routine Maintenance visible alarm light on front panel
- Ergonomically designed ice storage access, with disappearing door
- Door-closing movement dampening system
- Vapor-based microbial control system pouch in ice storage area
- PWD System for remote water drain (easy-fit installation)
- AgIION antimicrobial agent embedded in molded plastics parts
- CFC-free R-404A Refrigerant

Easy bin access



Hygienic scoop holder

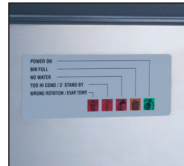


Proximity condenser air filter

Routine Maintenance Alarm



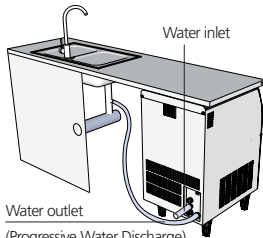
Front ON-OFF Switch



Electronic



Recessed Connections Panel



Water outlet
(Progressive Water Discharge)



WATER DISCHARGE up to 15 mt away and 1.7 mt high with PWD

This product qualifies for the following listings:



EF 156 Technologies



	24h	10°: 10°C		21°: 15°C		[kg] [lbs]		[WxDxH mm] 950x605x1000
		[kg]	[lbs]	[kg]	[lbs]	[kg]	[lbs]	
EF 156 AS		150	330,5	145	319,5	60	132	[WxDxH inches] 37 3/8"x23 13/16"x39 3/8"
EF 156 WS		160	352,5	150	330,5	60	132	



[v/Hz/ph]
230/50/1



R404A

Flake Ice

Residual water content 20%



Ice in its most natural form, made at a temperature just below zero degrees Celsius, with 20% residual water content, making it very moist.

Its flake shape makes it extremely versatile and very simple to use effectively.

2 Years Warranty

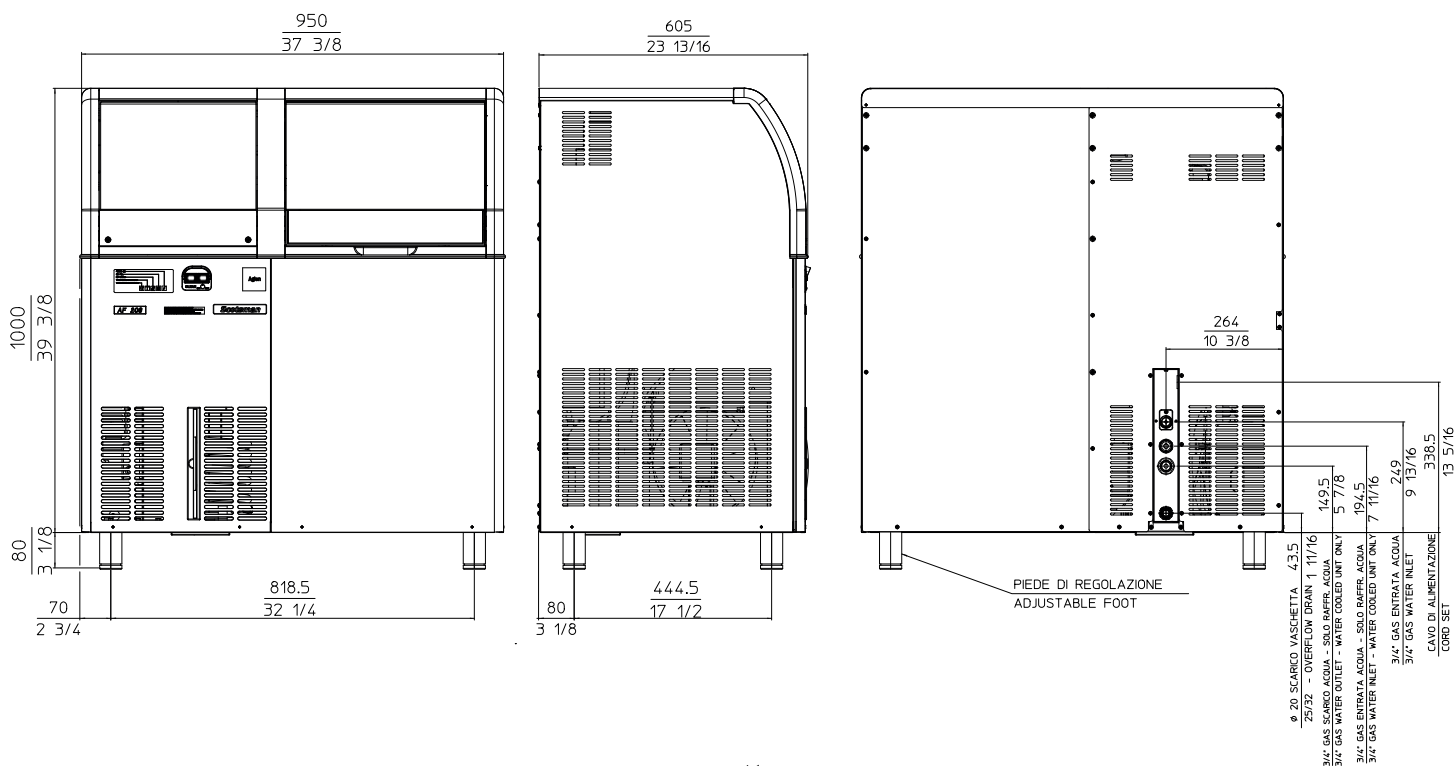
Subject to certain limitations and exclusions

Certified ISO 9001

www.scotsman-ice.it
www.scotsman-ice.com

Models and specifications are subject to change without notice.

Self Contained Ice Machine up to 160 Kg



EF 156 AIR COOLED

°C / °F	50° / 10°		60° / 15°		70° / 21°		90° / 32°	
	10°	150	147	144	138	kg		
50°	330,5	324	317,5	304	lbs			
21°	148	145	142	136	kg			
70°	326	319,5	313	299,5	lbs			
32°	126	123	120	114	kg			
90°	277,5	271	264,5	251,5	lbs			
38°	112	109	106	100	kg			
100	247	240	233,5	220,5	lbs			



EF 156 WATER COOLED

°C / °F	50° / 10°		60° / 15°		70° / 21°		90° / 32°	
	10°	160	154	148	136	kg		
50°	352,5	339,5	326	299,5	lbs			
21°	156	150	144	132	kg			
70°	344	330,5	317,5	291	lbs			
32°	152	146	140	128	kg			
90°	335	312	308,5	282	lbs			
38°	149	143	137	125	kg			
100	328,5	315	302	275,5	lbs			



Minimum	Maximum
10°C (50°F)	43°C (109°F)
5°C (41°F)	35°C (95°F)
-10%	+10%
1 BAR 14 psi	5 BAR 70 psi

Model	Compressor	Capacity [Btu/h] [W]	Volume [l]	Power [W]	FUSE	Energy [kWh] - 100 Kg	Water [l/h] [gal/h]	Weight [kg] [lbs]
EF 156 AS	Air Cooled	4845 1420	1,5	650	10	12,3	5 1,3	75 165
EF 156 WS	Water Cooled	4845 1420	1,5	510	10	9	76 20	75 165

IMPORTANT NOTICE:
Models and specifications are subject to change without notice.
This spec sheet is meant for commercial purpose only.
For technical documentation please refer to our service manuals.

www.scotsman-ice.it
www.scotsman-ice.com